

Demographic and Socioeconomic Estimates Community Planning Area Greater North Park



Jan 1, 2018

Total Population	55,325
Household Population	55,083
Group Quarters Population	242
Persons Per Household	2.27

Housing and Occupancy

	Total Housing Units	Households	Vacancy Rate
Total Housing Units	25,560	24,259	5.1%
Single Family - Detached	7,584	7,238	4.6%
Single Family - Attached	2,270	2,180	4.0%
Multi-Family	15,706	14,841	5.5%
Mobile Home and Other	0	0	--

Household Income

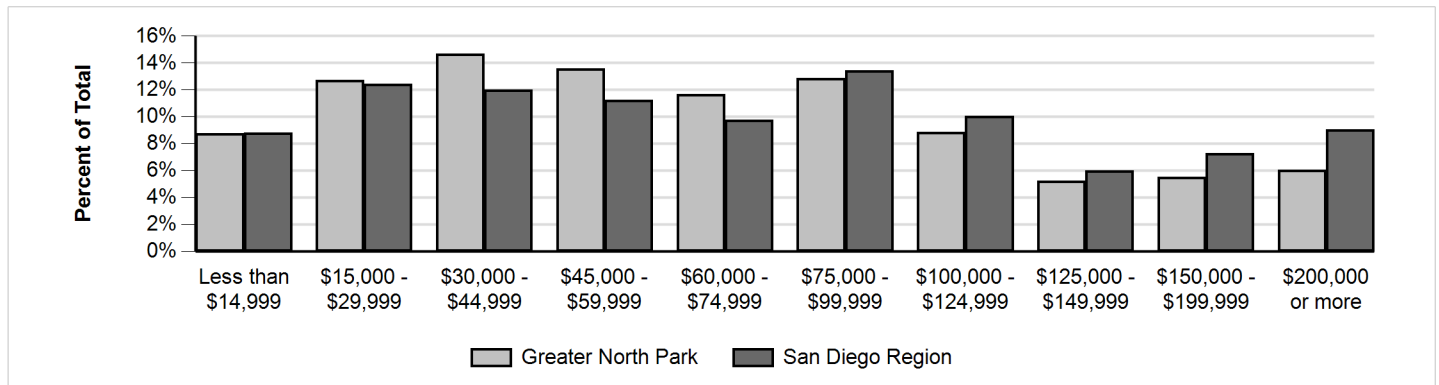
Households by Income Category (2010 \$, adjusted for inflation)

	Less than \$15,000	\$15,000-\$29,999	\$30,000-\$44,999	\$45,000-\$59,999	\$60,000-\$74,999	\$75,000-\$99,999	\$100,000-\$124,999	\$125,000-\$149,999	\$150,000-\$199,999	\$200,000 or more
% of Total	9%	13%	15%	14%	12%	13%	9%	5%	6%	6%

Median Household Income

2018

Adjusted for Inflation (2010 \$)	\$60,294
Not adjusted for inflation (current 2017\$)	\$67,980



IMPORTANT ADVISORY:

Caution should be taken when using data for small population groups, particularly at small levels of geography. Minor adjustments were made (such as correcting the location of housing units that were erroneously allocated by the Census Bureau to roads and open space) to more accurately reflect the region's true population and housing distribution.

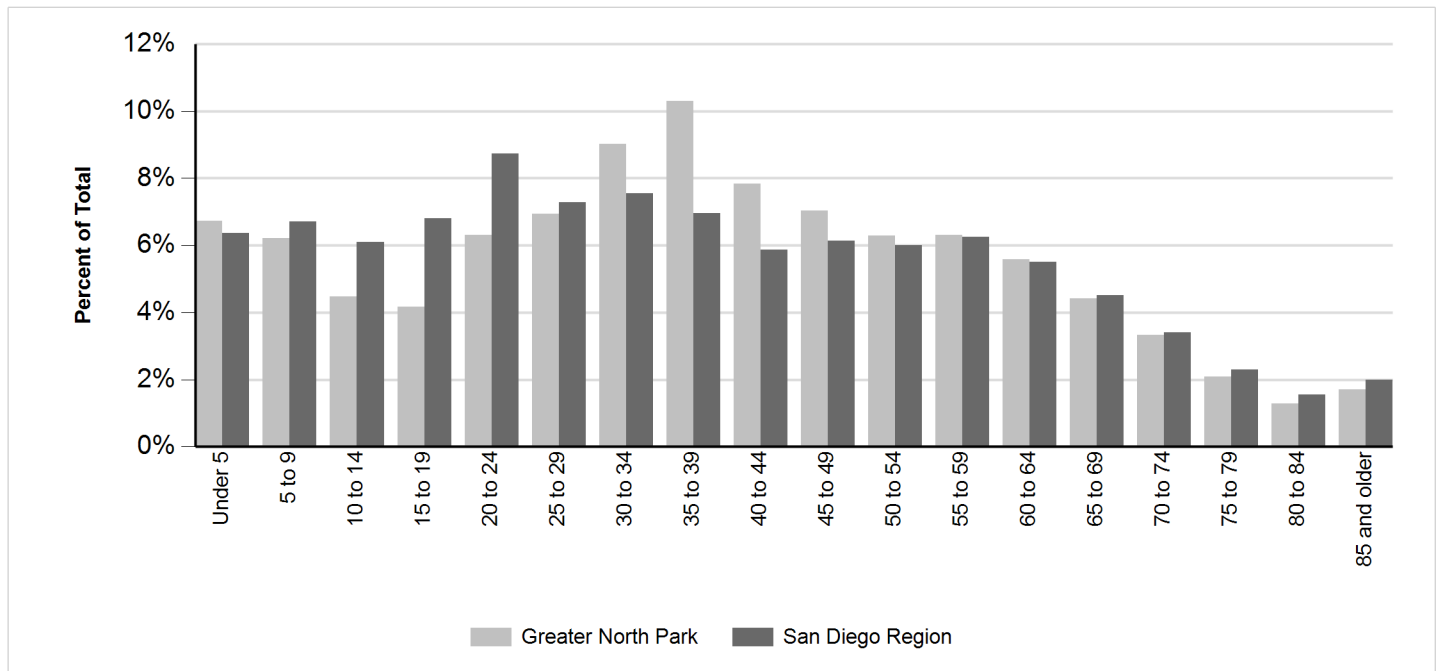
In addition, Census 2010 does not include information about structure type or household income. Those details and other demographic estimates shown here are developed from other sources, including the California Department of Finance E-5 estimates for cities and the County of San Diego; San Diego County Assessor Records, vital events records from the California Department of Health, and income data from the U.S. Census Bureau American Community Survey.

Caution should always be taken when using data for small population groups, particularly at small levels of geography.

Population by Age and Sex

	Total	Male	Female	Percent Female
Total Population	55,325	27,826	27,499	50%
Under 5	3,724	1,883	1,841	49%
5 to 9	3,438	1,735	1,703	50%
10 to 14	2,472	1,240	1,232	50%
15 to 17	1,311	676	635	48%
18 and 19	995	520	475	48%
20 to 24	3,485	1,759	1,726	50%
25 to 29	3,836	2,007	1,829	48%
30 to 34	4,991	2,457	2,534	51%
35 to 39	5,699	2,776	2,923	51%
40 to 44	4,336	2,232	2,104	49%
45 to 49	3,896	2,076	1,820	47%
50 to 54	3,478	1,872	1,606	46%
55 to 59	3,486	1,833	1,653	47%
60 and 61	1,328	676	652	49%
62 to 64	1,765	871	894	51%
65 to 69	2,439	1,142	1,297	53%
70 to 74	1,838	874	964	52%
75 to 79	1,153	517	636	55%
80 to 84	714	303	411	58%
85 and older	941	377	564	60%
Under 18	10,945	5,534	5,411	49%
65 and older	7,085	3,213	3,872	55%
Median Age	38.0	37.9	38.0	N/A

Population by Age



Population by Race, Ethnicity and Age

	Non-Hispanic					
	Hispanic	White	Black	American Indian	Asian & Pacific Isl.	All Other
Total Population	15,532	30,347	3,241	348	3,948	1,909
Under 5	1,268	1,947	159	18	184	148
5 to 9	1,338	1,586	178	6	169	161
10 to 14	1,032	986	162	8	126	158
15 to 17	579	505	91	2	61	73
18 and 19	495	323	61	4	59	53
20 to 24	1,272	1,485	242	19	247	220
25 to 29	1,115	1,992	248	45	282	154
30 to 34	1,313	2,773	281	46	378	200
35 to 39	1,428	3,251	282	44	504	190
40 to 44	1,136	2,432	255	19	357	137
45 to 49	1,017	2,235	210	25	303	106
50 to 54	963	1,936	236	29	220	94
55 to 59	752	2,167	263	30	208	66
60 and 61	261	846	86	10	99	26
62 to 64	350	1,104	133	15	136	27
65 to 69	449	1,600	133	17	208	32
70 to 74	284	1,304	78	3	143	26
75 to 79	196	769	64	5	102	17
80 to 84	145	426	46	1	83	13
85 and older	139	680	33	2	79	8
Under 18	4,217	5,024	590	34	540	540
65 and older	1,213	4,779	354	28	615	96
Median Age	32.5	40.7	38.5	38.0	39.6	29.6